

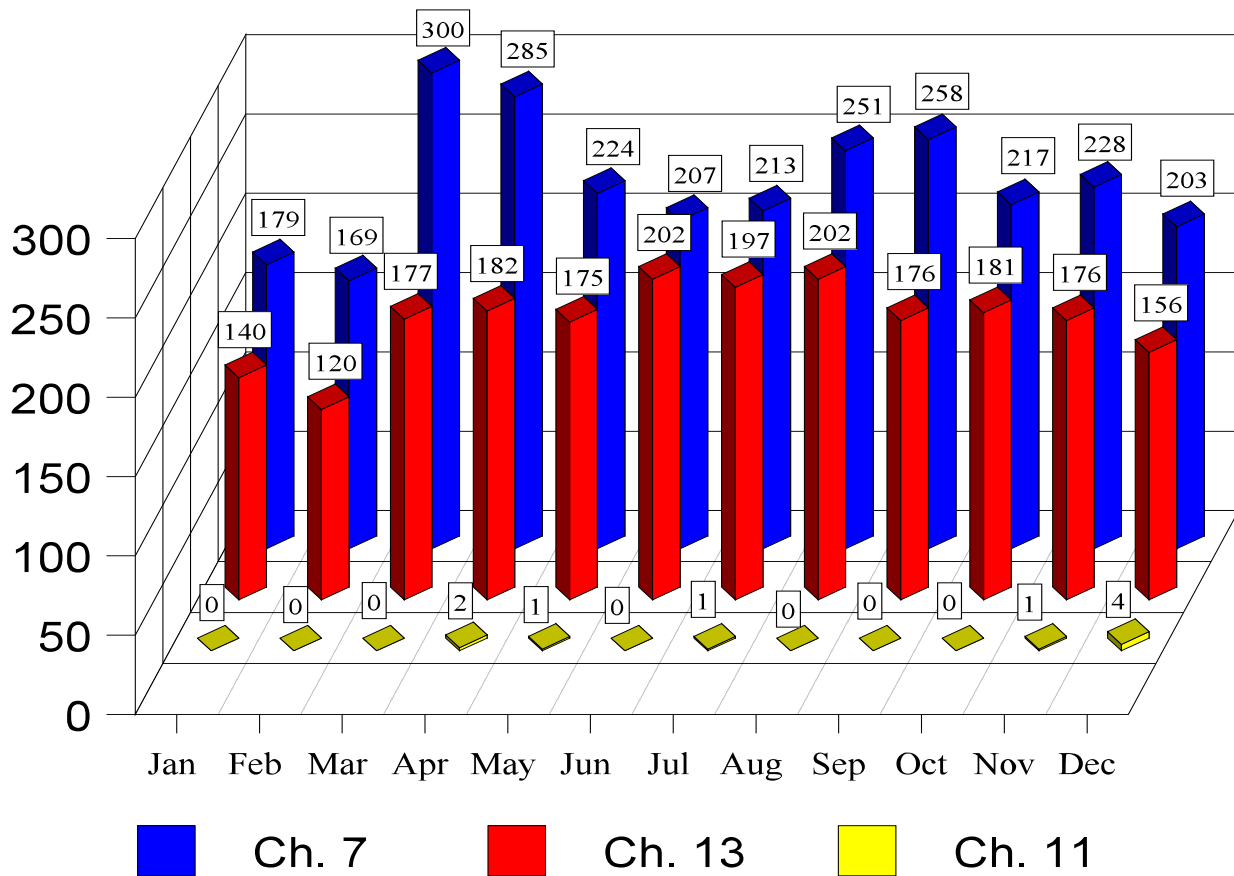


U.S. Bankruptcy Court Eastern District of Missouri

Dana C. McWay, Clerk of Court
Year 2022 Case Processing Statistics

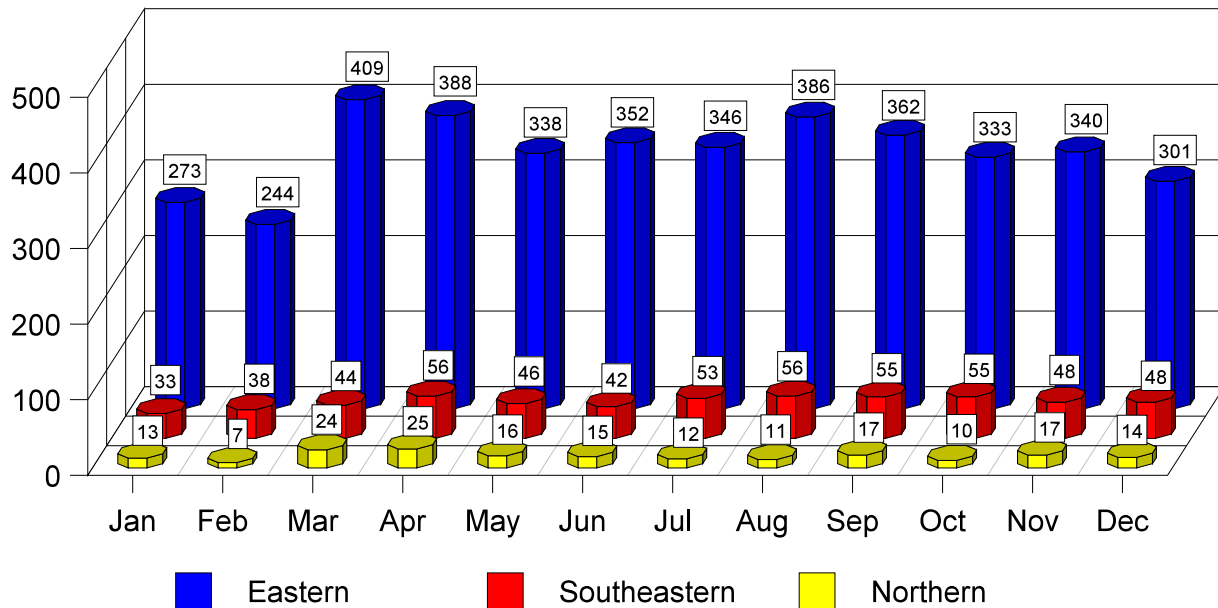
New Cases by Chapter

During the calendar year of 2022, there were 4,827 total cases filed. Of these 4,827 cases, there were 2,734 cases opened under Chapter 7; 9 cases opened under Chapter 11; and 2,084 cases opened under Chapter 13. The chart below depicts the number of cases opened per chapter for each month in 2022.



New Cases by Division

During the calendar year of 2022, there were 4,072 cases opened in the Eastern Division, 574 cases opened in the Southeastern Division, and 181 cases opened in the Northern Division. The chart below depicts the number of cases opened per division for each month in 2022.



New Adversaries

During the calendar year of 2022, there were 60 adversary proceedings filed with the Court. The chart below depicts the number of adversaries filed each month of 2022.

