

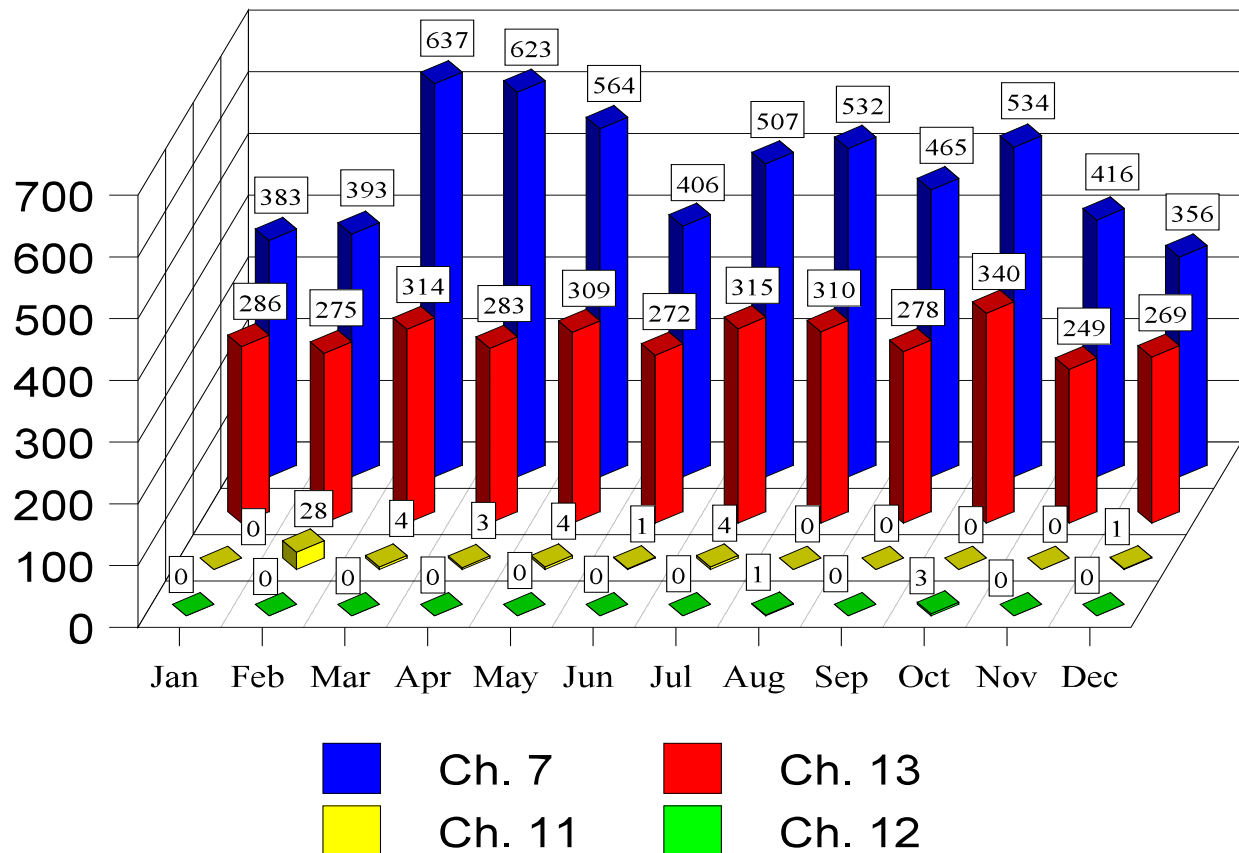


U.S. Bankruptcy Court Eastern District of Missouri

Dana C. McWay, Clerk of Court
Year 2019 Case Processing Statistics

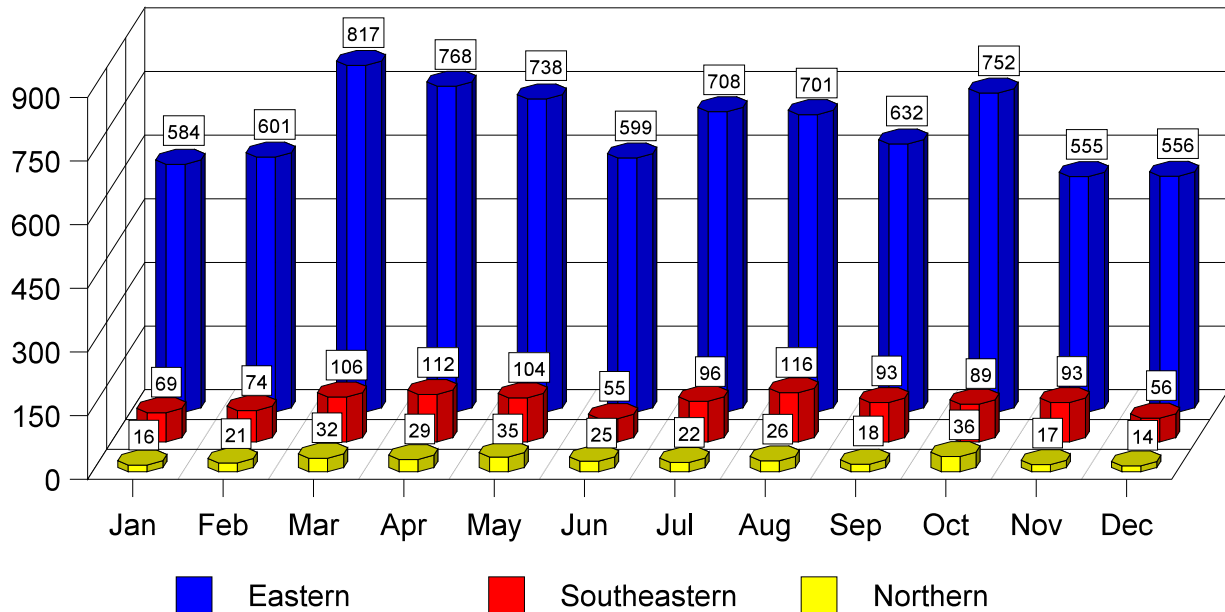
New Cases by Chapter

During the calendar year of 2019, there were 9,365 total cases filed. Of these 9,365 cases, there were 5,816 cases opened under Chapter 7; 45 cases opened under Chapter 11; 4 cases opened under Chapter 12; and 3,500 cases opened under Chapter 13. The chart below depicts the number of cases opened per chapter for each month in 2019.



New Cases by Division

During the calendar year of 2019, there were 8,011 cases opened in the Eastern Division, 1,063 cases opened in the Southeastern Division, and 291 cases opened in the Northern Division. The chart below depicts the number of cases opened per division for each month in 2019.



New Adversaries

During the calendar year of 2019, there were 217 adversary proceedings filed with the Court. The chart below depicts the number of adversaries filed each month of 2019.

