

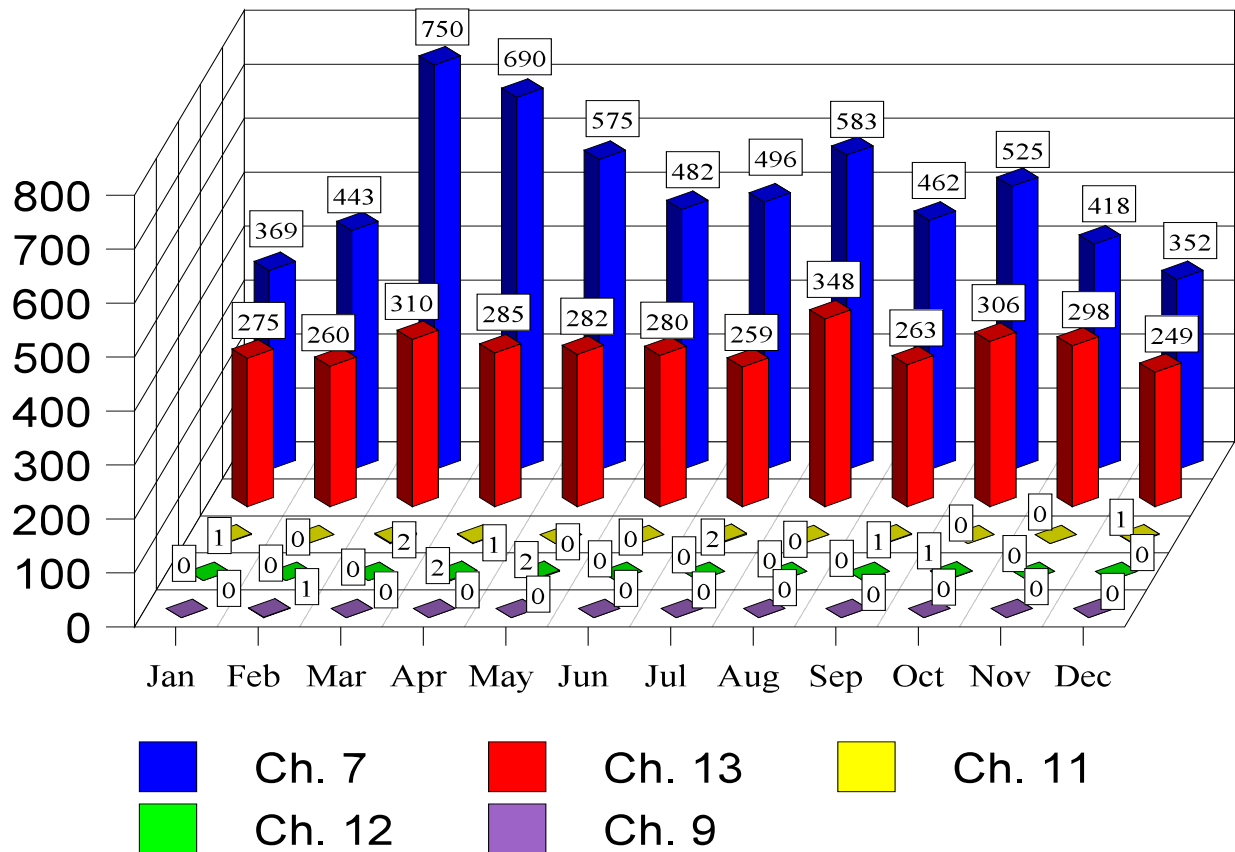


U.S. Bankruptcy Court Eastern District of Missouri

Dana C. McWay, Clerk of Court
Year 2018 Case Processing Statistics

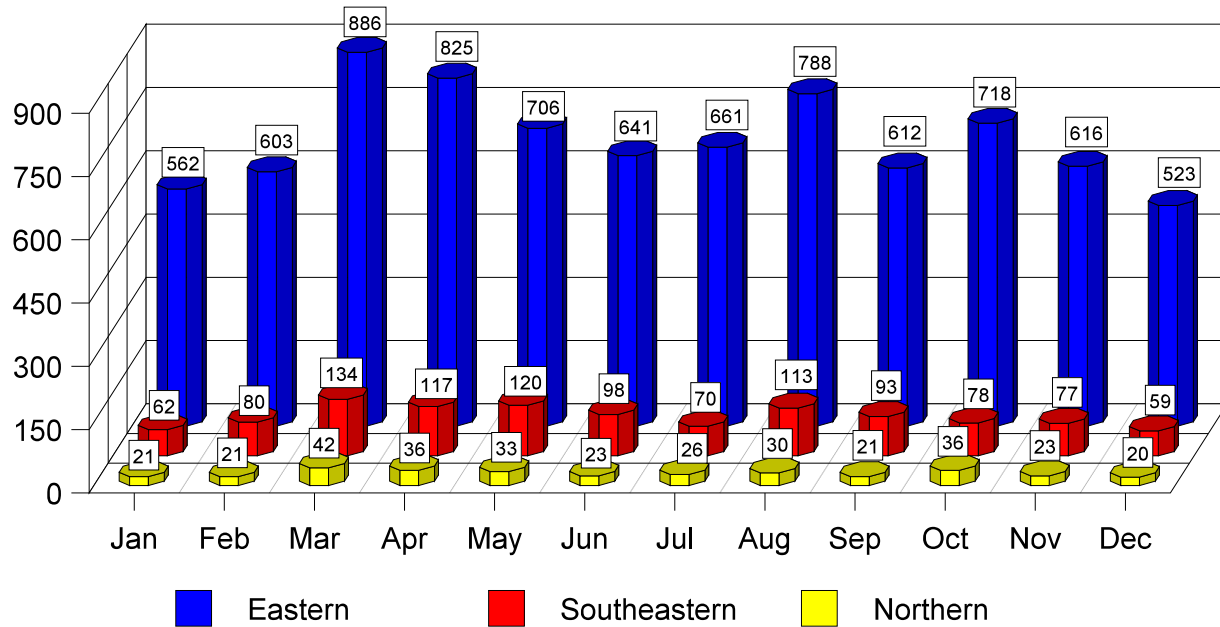
New Cases by Chapter

During the calendar year of 2018, there were 9,574 total cases filed. Of these 9,574 cases, there were 6,145 cases opened under Chapter 7; 1 case opened under Chapter 9; 8 cases opened under Chapter 11; 5 cases opened under Chapter 12; and 3,415 cases opened under Chapter 13. The chart below depicts the number of cases opened per chapter for each month in 2018.



New Cases by Division

During the calendar year of 2018, there were 8,141 cases opened in the Eastern Division, 1,101 cases opened in the Southeastern Division, and 332 cases opened in the Northern Division. The chart below depicts the number of cases opened per division for each month in 2018.



New Adversaries

During the calendar year of 2018, there were 133 adversary proceedings filed with the Court. The chart below depicts the number of adversaries filed each month of 2018.

