

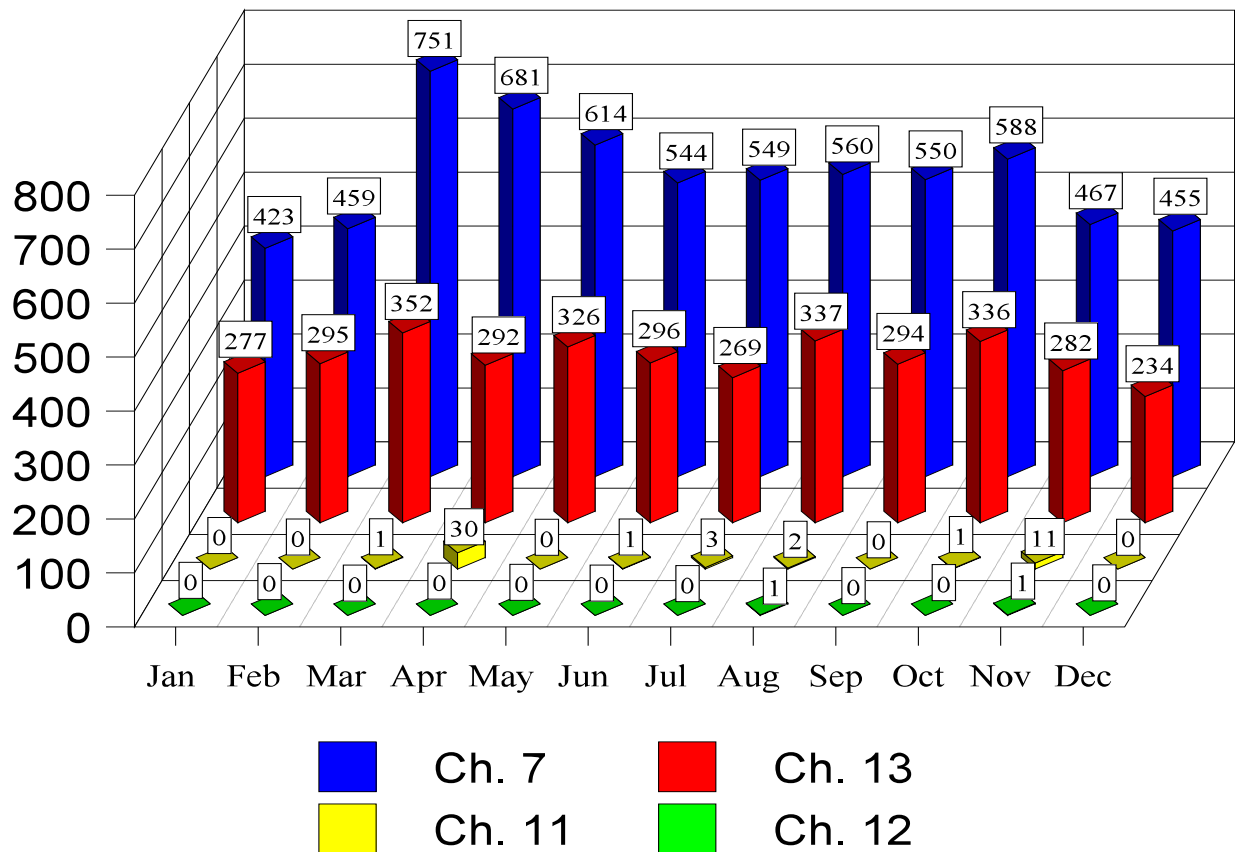


## U.S. Bankruptcy Court Eastern District of Missouri

Dana C. McWay, Clerk of Court  
Year 2017 Case Processing Statistics

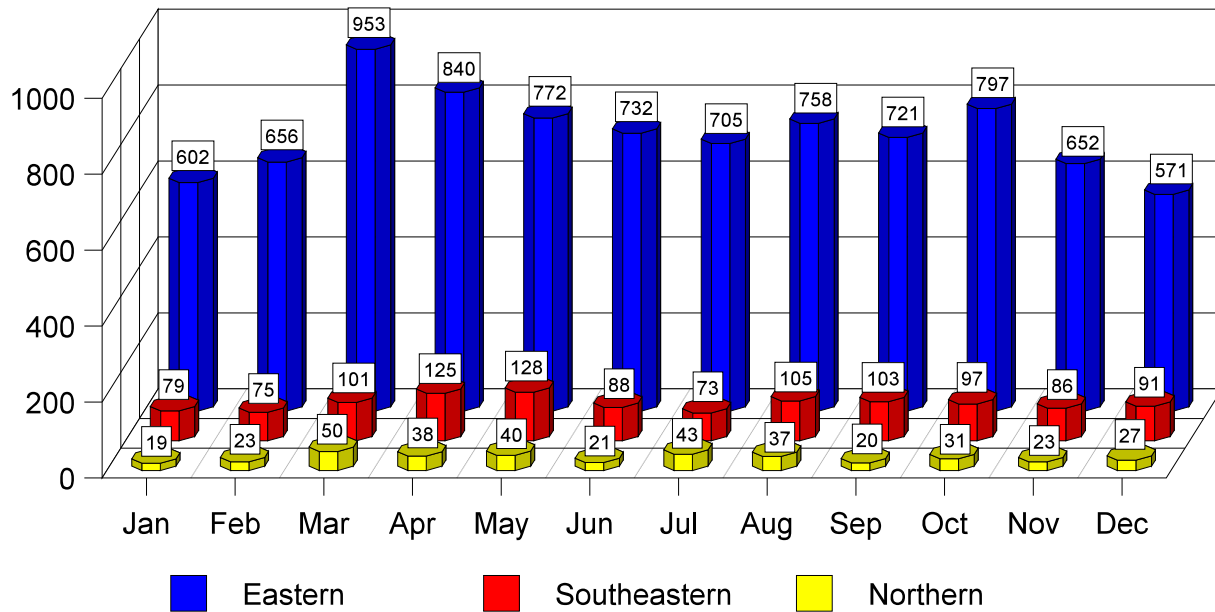
### New Cases by Chapter

During the calendar year of 2017, there were 10,282 total cases filed. Of these 10,282 cases, there were 6,641 cases opened under Chapter 7; 49 cases opened under Chapter 11; 2 case opened under Chapter 12; and 3,590 cases opened under Chapter 13. The chart below depicts the number of cases opened per chapter for each month in 2017.



## New Cases by Division

During the calendar year of 2017, there were 8,759 cases opened in the Eastern Division, 1,151 cases opened in the Southeastern Division, and 372 cases opened in the Northern Division. The chart below depicts the number of cases opened per division for each month in 2017.



## New Adversaries

During the calendar year of 2017, there were 203 adversary proceedings filed with the Court. The chart below depicts the number of adversaries filed each month of 2017.

